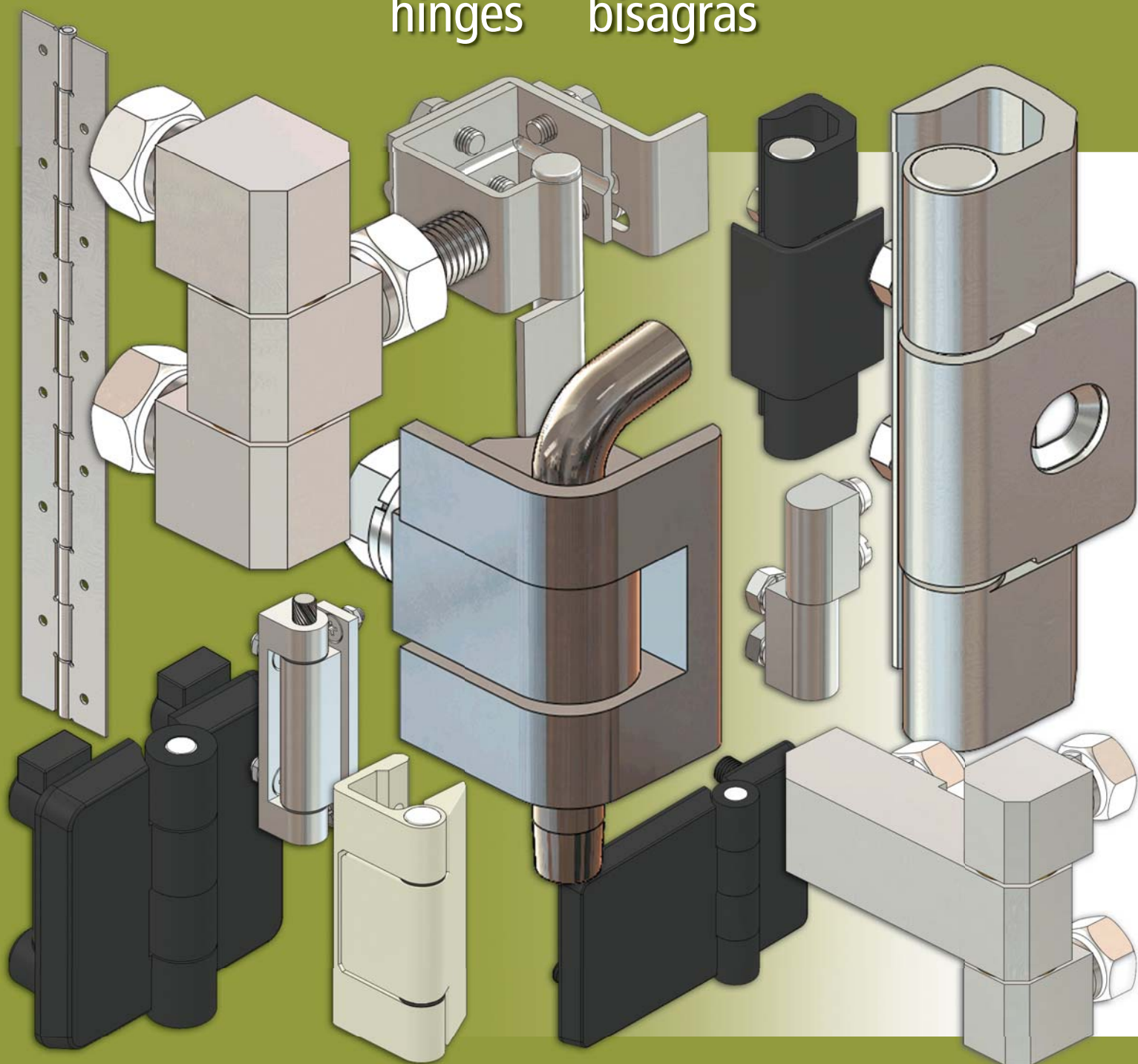


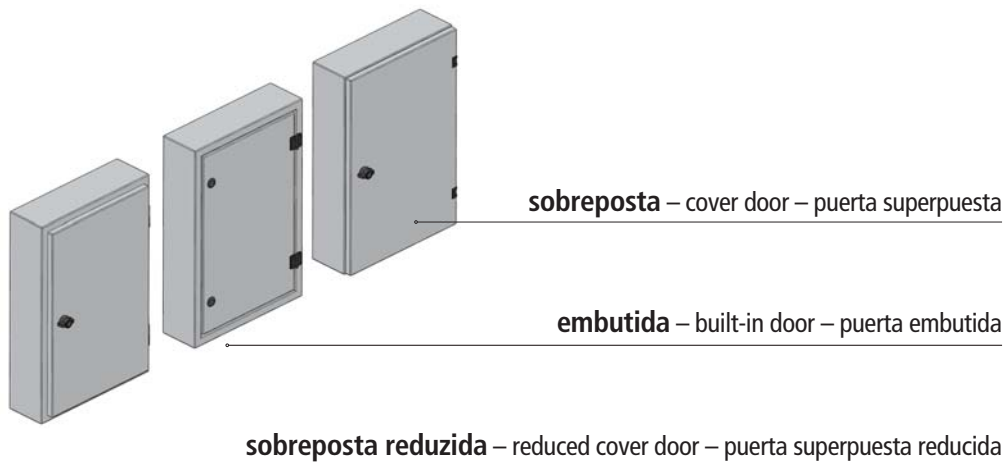


dobradiças

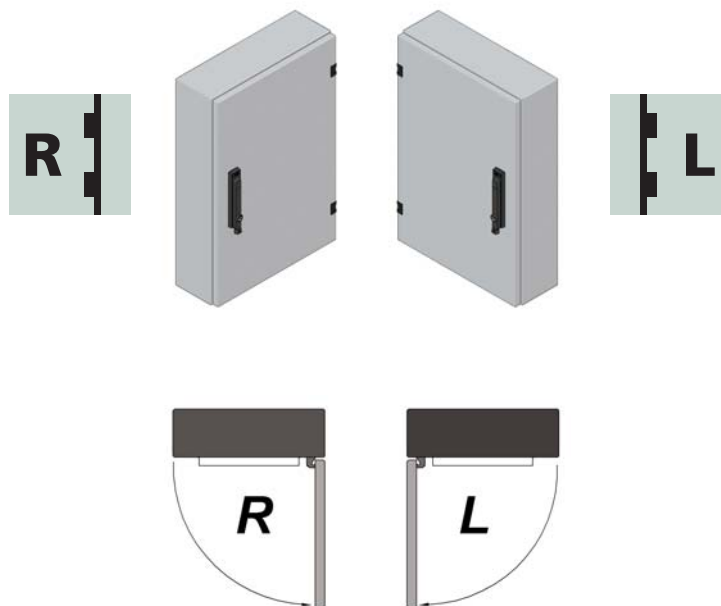
hinges bisagras



tipos de portas – doors type – tipos de puertas



abertura das portas – doors opening – apertura de puertas



graus de abertura – opening degrees – grados de apertura



tipos de dobradiças – hinges type – tipos de bisagras

IJ

dobradiças injetadas – injected hinges – bisagras inyectadas

ES

dobradiças estampadas – stamped hinges – bisagras estampadas

US

dobradiças usinadas – machined hinges – bisagras mecanizadas

desmontagem externa – outside disassemble – desmontaje exterior



desmontável – disassemble – desmontable



não desmontável – non disassemble – no desmontable

definição – definition – definición

– Dobradiças são dispositivos que permitem a abertura de portas através do giro de um dos lados da porta.

– Hinges are devices that allow the doors opening through the spinning of one of the doors side.

– Bisagras son dispositivos que permiten la apertura de puertas a traves del giro de uno de los lados de la puerta.

planas pino removível – flat removable pin – planas eje removible
sem parafuso – without screw – sin tornillo

**Fixação**

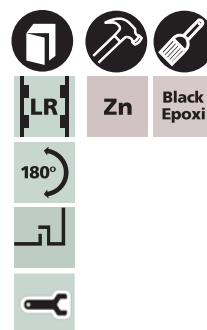
Por parafuso cabeça chata Philips
(vendido separadamente).

Fixing

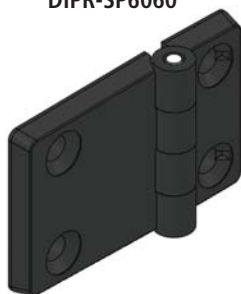
By Phillips flat head screw (sold
separately).

Fijación

Por tornillo de cabeça plana
Phillips (vendido en separado).



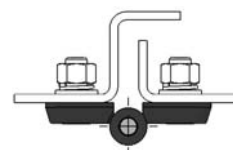
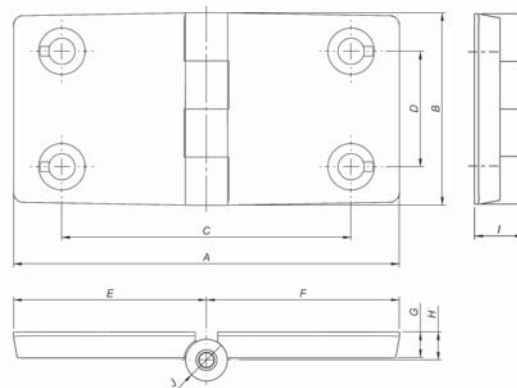
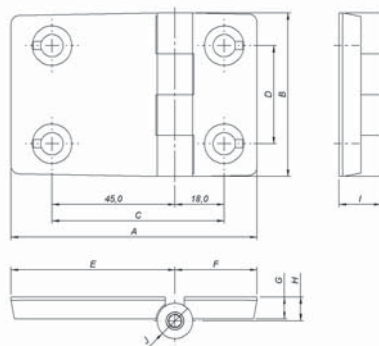
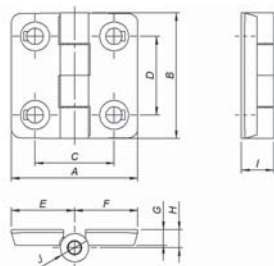
DIPR-SP4040
DIPR-SP5050
DIPR-SP6060



DIPR-SP9060



DIPR-SP12060



PARAFUSOS SCREWS TORNILLOS	CABEÇA – HEAD – CABEZA	TIPO – TYPE – TIPO	MEDIDAS – MEASUREMENT – DIMENSIONES (mm)		CÓDIGO – CODE – CÓDIGO
	CHATA – FLAT – PLANA	PHILIPS	M5 x 16		75A.101
			M6 x 16		75A.102
			M8 x 20		75A.103

FIXAÇÃO POR PARAFUSOS FIXING BY SCREWS FIJACIÓN POR TORNILLOS	MODELO – MODEL – MODELO	CÓDIGO – CODE – CÓDIGO	MEDIDAS – MEASUREMENT – DIMENSIONES (mm)									
			A	B	C	D	E	F	G	H	I	J
	DIPR-SP4040P	41.033.A20	40	40	25	25	20	20	5	6	10,5	ø 09
	DIPR-SP5050P	41.033.A14	50	50	30	30	25	25	6	7	12,5	ø 11
	DIPR-SP6060P	41.033.A17	60	60	36	36	30	30	8	9	15,5	ø 13
	DIPR-SP9060P	41.033.A18	90	60	63	36	60	30	8	9	15,5	ø 13
	DIPR-SP12060P	41.033.A19	120	60	90	36	60	60	8	9	15,5	ø 13

planas pino removível – flat removable pin – planas eje removible
por pino – by pin – por clavija

**Fixação**

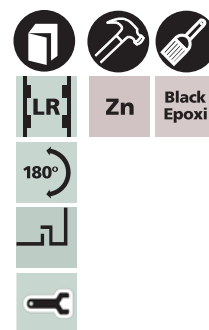
Por pino em poliamida próprio para espessuras 1,6 ou 2,1mm.

Fixing

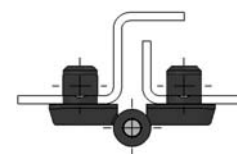
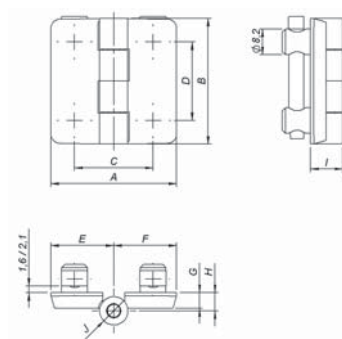
By polyamide pin suitable for thicknesses 1,6 or 2,1mm.

Fijación

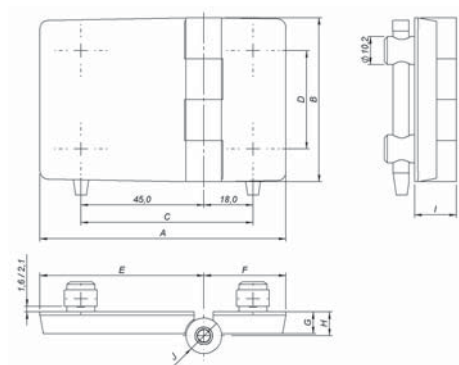
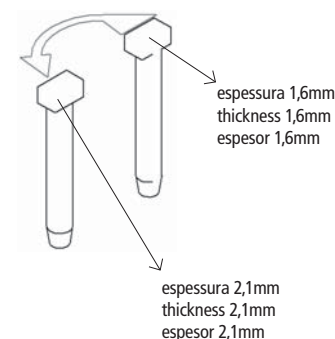
Por clavija en poliamida adecuada para espesores 1,6 o 2,1mm.



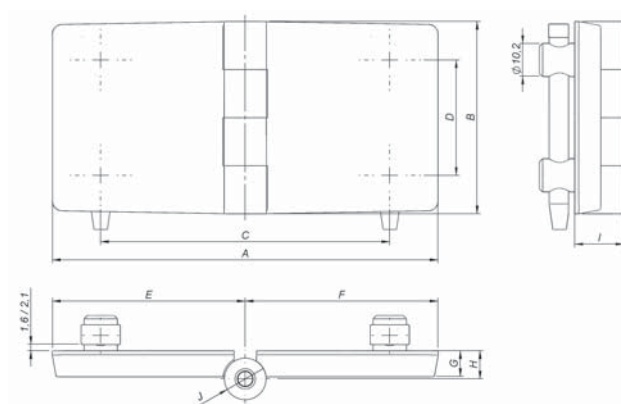
DIPR-PP4040
DIPR-PP5050
DIPR-PP6060



DIPR-PP9060

**montagem – assembly – montaje**

DIPR-PP12060



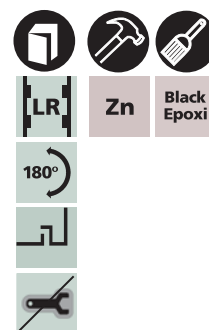
FIXAÇÃO POR PINOS FIXING BY PINS FIJACIÓN POR CLAVIJAS	MODELO – MODEL – MODELO	CÓDIGO – CODE – CÓDIGO	MEDIDAS – MEASUREMENT – DIMENSIONES (mm)									
			A	B	C	D	E	F	G	H	I	J
	DIPR-PP4040P	41.033.A07	40	40	25	25	20	20	5	6	10,5	ø 09
	DIPR-PP5050P	41.033.A08	50	50	30	30	25	25	6	7	12,5	ø 11
	DIPR-PP6060P	41.033.A11	60	60	36	36	30	30	8	9	15,5	ø 13
	DIPR-PP9060P	41.033.A12	90	60	63	36	60	30	8	9	15,5	ø 13
	DIPR-PP12060P	41.033.A13	120	60	90	36	60	60	8	9	15,5	ø 13

planas pino fixo – flat fixed pin – planas eje fijo
parafuso embutido – flush screw – tornillo embutido

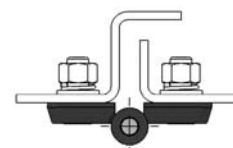
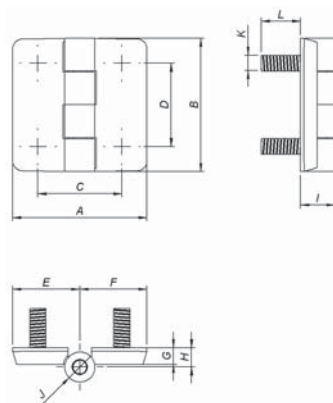
Fixação
Por parafuso embutido.

Fixing
By flush screw.

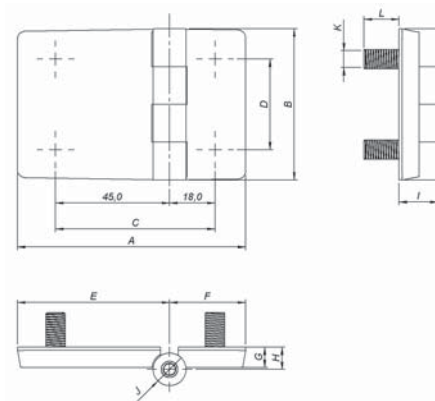
Fijación
Por tornillo embutido.



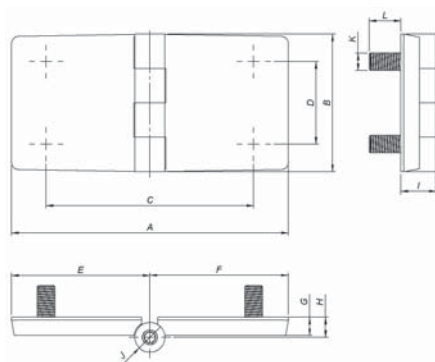
DIPF-PE4040
DIPF-PE5050
DIPF-PE6060



DIPF-PE9060



DIPF-PE12060



FIXAÇÃO POR PARAFUSOS FIXING BY SCREWS FIJACIÓN POR TORNILLOS	MODELO – MODEL – MODELO	CÓDIGO – CODE – CÓDIGO	MEDIDAS – MEASUREMENT – DIMENSIONAL (mm)											
			A	B	C	D	E	F	G	H	I	J	K	L
	DIPF-PE4040P	42.033.A01	40	40	25	25	20	20	5	6	10,5	ø 09	M5	12
	DIPF-PE5050P	42.033.A02	50	50	30	30	25	25	6	7	12,5	ø 11	M6	12
	DIPF-PE6060P	42.033.A03	60	60	36	36	30	30	8	9	15,5	ø 13	M8	13
	DIPF-PE9060P	42.033.A04	90	60	63	36	60	30	8	9	15,5	ø 13	M8	13
	DIPF-PE12060P	42.033.A05	120	60	90	36	60	60	8	9	15,5	ø 13	M8	13

planas pino fixo – flat fixed pin – planas eje fijo
por pino – by pin – por clavija

Fixação

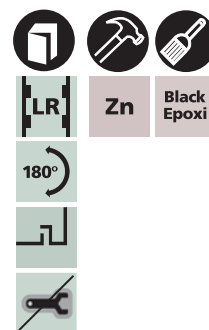
Por pino em poliamida próprio
para espessuras 1,6 ou 2,1mm.

Fixing

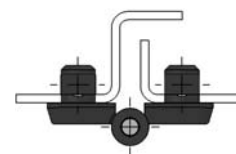
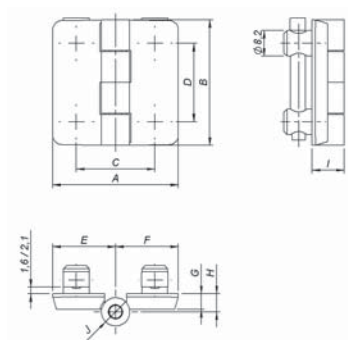
By polyamide pin suitable for
thicknesses 1,6 or 2,1mm.

Fijación

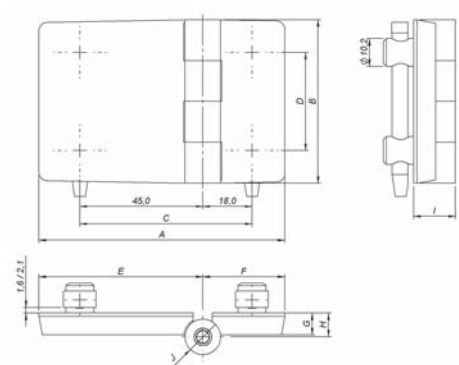
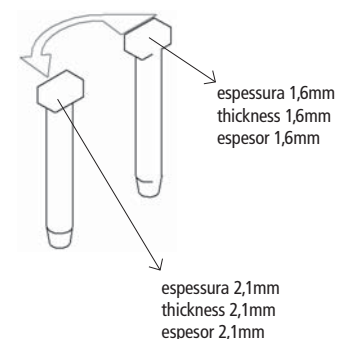
Por clavija en poliamida
adecuada para espesores 1,6
o 2,1mm.



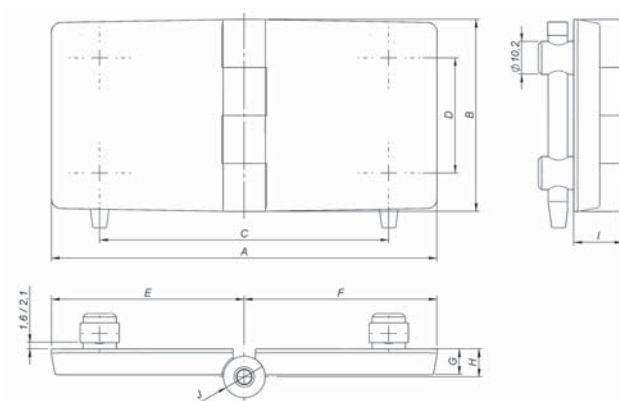
DIPF-PP4040
DIPF-PP5050
DIPF-PP6060



DIPF-PP9060

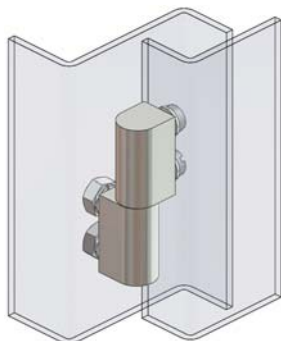
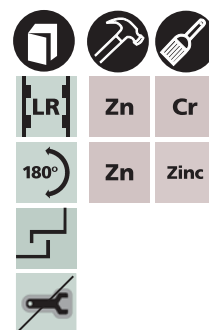
**montagem – assembly – montaje**

DIPF-PP12060

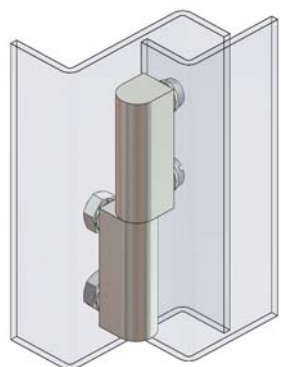
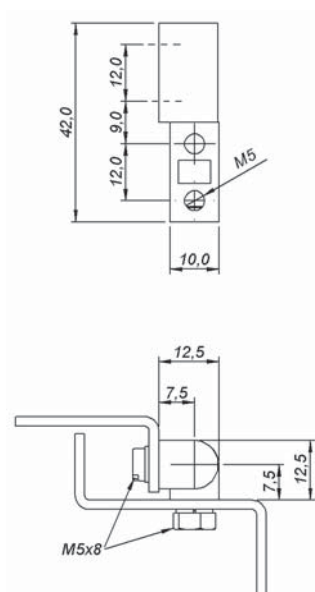


FIXAÇÃO POR PINOS FIXING BY PIN FIJACIÓN POR CLAVIJAS	MODELO – MODEL – MODELO	CÓDIGO – CODE – CÓDIGO	MEDIDAS – MEASUREMENT – DIMENSIONAL (mm)									
			A	B	C	D	E	F	G	H	I	J
	DIPF-PP4040P	42.033.A06	40	40	25	25	20	20	5	6	10,5	ø 09
	DIPF-PP5050P	42.033.A07	50	50	30	30	25	25	6	7	12,5	ø 11
	DIPF-PP6060P	42.033.A08	60	60	36	36	30	30	8	9	15,5	ø 13
	DIPF-PP9060P	42.033.A09	90	60	63	36	60	30	8	9	15,5	ø 13
	DIPF-PP12060P	42.033.A10	120	60	90	36	60	60	8	9	15,5	ø 13

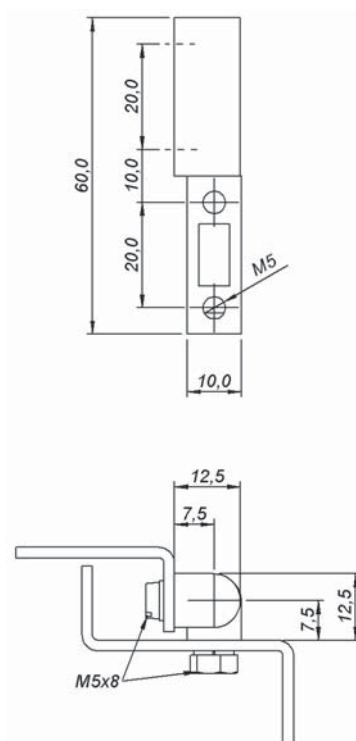
standard D20 – standard D20 – standard D20

FixaçãoPor parafuso M5 em aço zinca-
do (incluso no fornecimento).**Fixing**By zinc plated steel screw M5
(included).**Fijación**Por tornillo M5 en acero cincado
(incluído en el suministro).

DIST-407/D20



DIST-607/D20



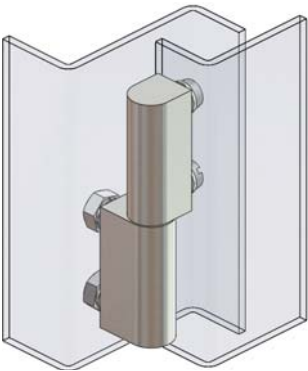
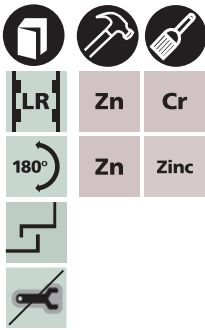
MODELO – MODEL – MODELO	CÓDIGO – CODE – CÓDIGO
DIST-407Z/D20	40.188.201
DIST-607Z/D20	40.188.202
DIST-407C/D20	40.122.201
DIST-607C/D20	40.122.202

standard D25 – standard D25 – standard D25

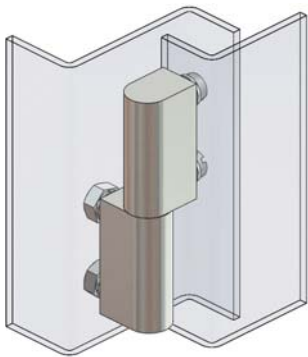
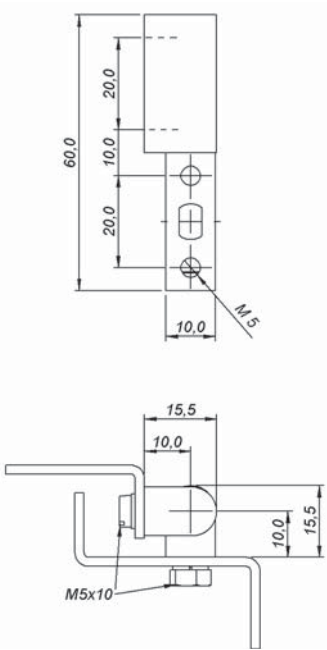
Fixação
Por parafuso M5 em aço zinca-
do (incluso no fornecimento).

Fixing
By zinc plated steel screw M5
(included).

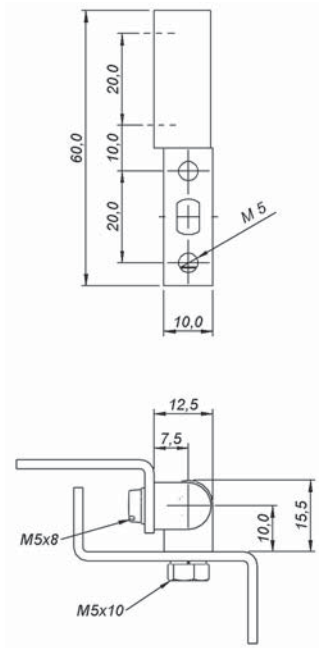
Fijación
Por tornillo M5 en acero cincado
(incluído en el suministro).



DIST-610/D25



DIST-617/D25



MODELO – MODEL – MODELO	CÓDIGO – CODE – CÓDIGO
DIST-610Z/D25	40.188.203
DIST-617Z/D25	40.188.204
DIST-610C/D25	40.122.204
DIST-617C/D25	40.122.205

DIEC

dobradiças injetadas
 injected hinges
 bisagras injectadas



encaixe – fitting – encaje

Fixação

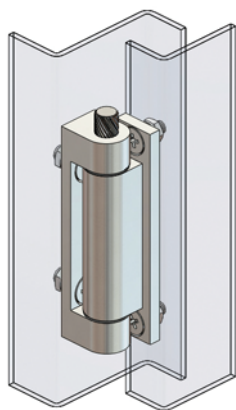
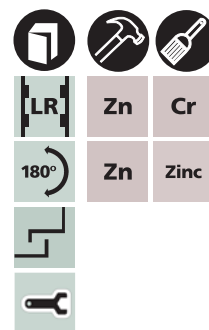
Por parafuso cabeça chata e porca em aço zincado (incluído no fornecimento).

Fixing

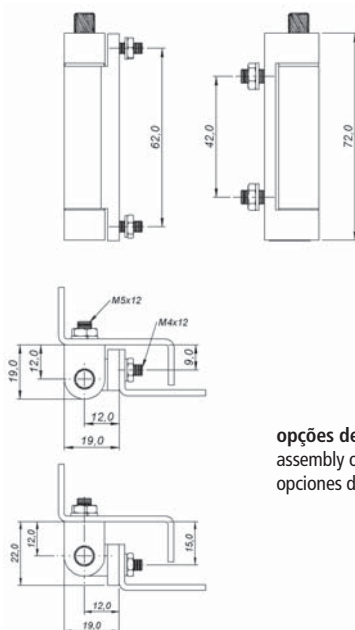
By flat head screw and zinc plated steel thread (included).

Fijación

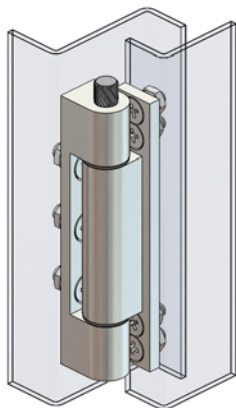
Por tornillo de cabeza plana y tuerca en acero cincado (incluido en el suministro).



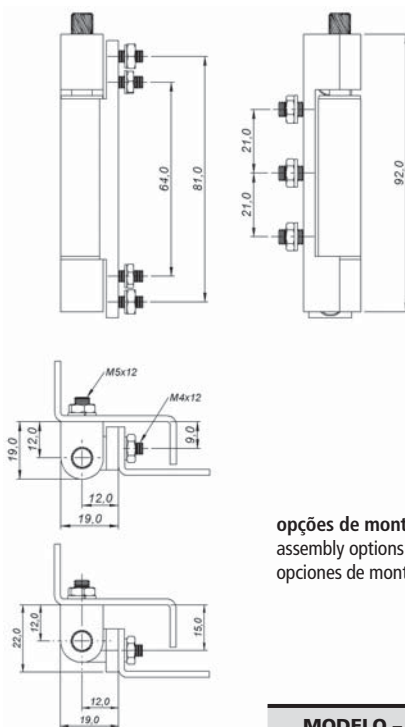
DIEC-72



opções de montagem
 assembly options
 opciones de montaje



DIEC-92



opções de montagem
 assembly options
 opciones de montaje

MODELO – MODEL – MODELO	CÓDIGO – CODE – CÓDIGO
DIEC-72Z	40.388.201
DIEC-92Z	40.388.202
DIEC-72C	40.322.201
DIEC-92C	40.322.202

semi embutida – semi embedded – semi embutida

poliamida 6 – polyamide 6 – poliamida 6

Fixação

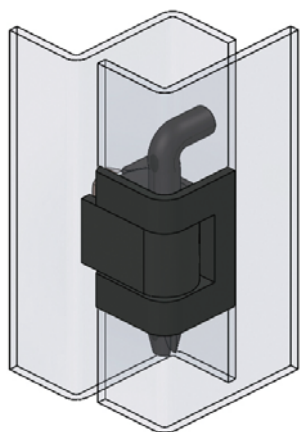
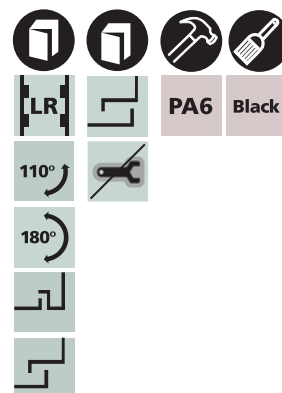
Por parafuso cabeça chata M4 em aço zincado (não incluso no fornecimento) e pino de giro em poliacetal.

Fixing

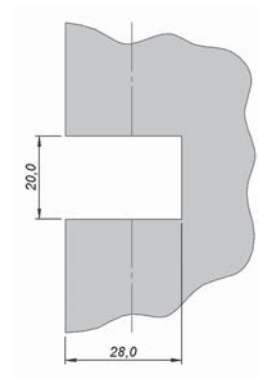
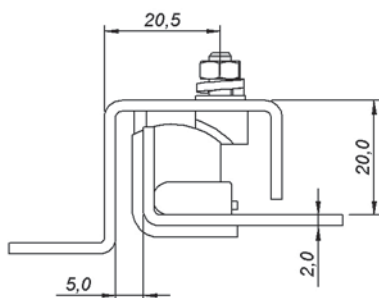
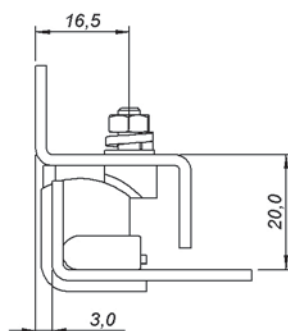
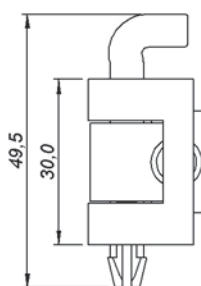
By M4 flat head zinc plated steel screw (not included) and polyacetal spin pin.

Fijación

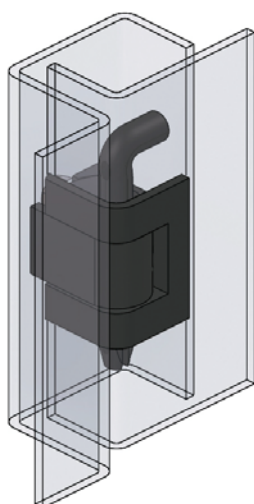
Por tornillo cabeza plana M4 en acero cincado (no incluido en el suministro) y eje de giro en poliacetal.



DISE-PP



recorte de fixação
cut out
corte de fijación



DISE-PP

MODELO – MODEL – MODELO	CÓDIGO – CODE – CÓDIGO
DISE-PP	40.244.001

DISE-Z

dobradiças injetadas
injected hinges
bisagras injectadas

semi embutida – semi embedded – semi embutida

zamac – zamac – zamac

Fixação

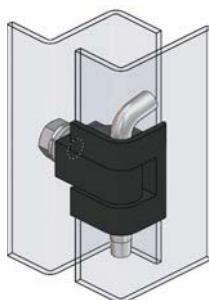
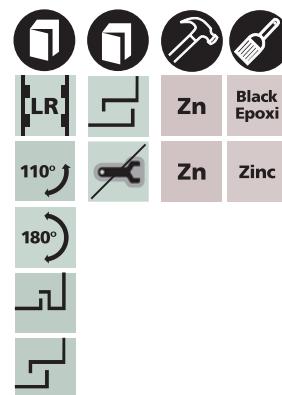
Por parafuso M6 x 12 em aço
zincado (incluso no forneci-
mento).

Fixing

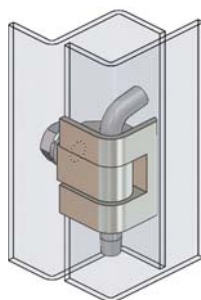
By M6 x 12 zinc plated steel
screw (included).

Fijación

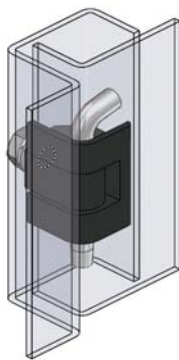
Por tornillo M6 x 12 en acero
cincado (incluido en el sumi-
nistro).



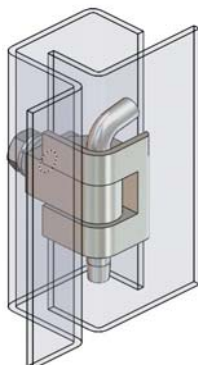
DISE-ZP/D20



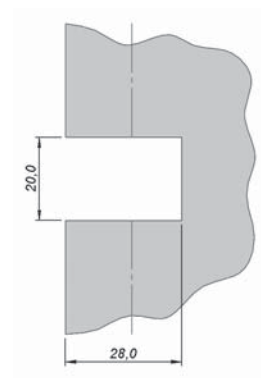
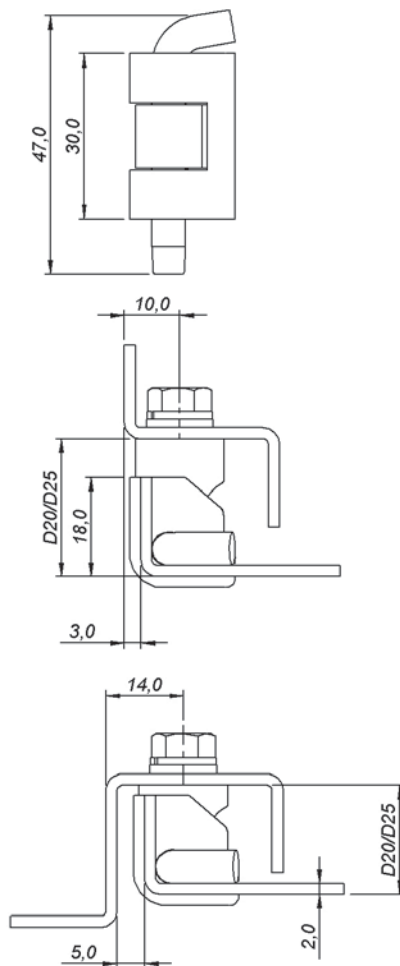
DISE-ZZ/D20



DISE-ZP/D25



DISE-ZZ/D25



recorte de fixação
cut out
corte de fijación

MODELO – MODEL – MODELO	CÓDIGO – CODE – CÓDIGO
DISE-ZZ/D20	40.288.201
DISE-ZZ/D25	40.288.202
DISE-ZP/D20	40.233.201
DISE-ZP/D25	40.233.202

painel – panel – armario

$$120^\circ - 120^\circ - 120^\circ$$


Fixação

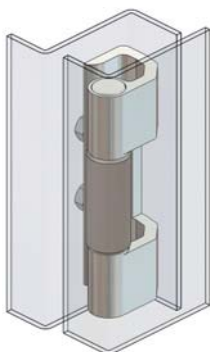
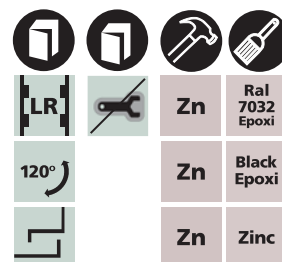
Por solda (versão invisível), por parafuso (versão regulável), por pino (versão encaixe). Utiliza furação padrão de 25mm e 50mm na coluna. Intercambiável com a furação da trava do fecho no padrão de 25mm.

Fixing

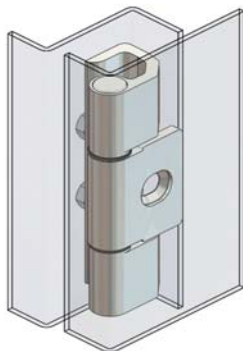
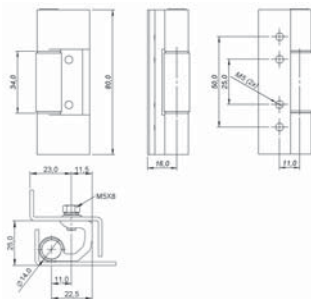
By welding (invisible version), by screw (adjustable version), by pin (fitting version). Uses 25mm and 50mm standard hole in the column. Interchangeable with the latch locking hole on 25mm standard hole.

Fijación

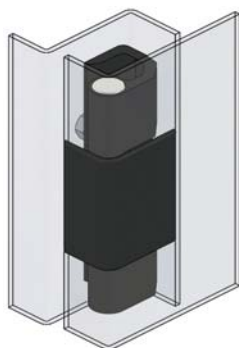
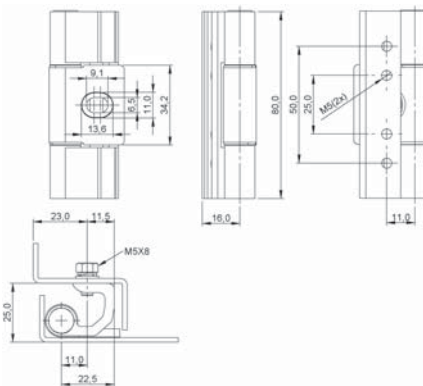
Por soldadura (versión invisible), por tornillo (versión regulable), por eje (versión encaje). Utiliza perforación estándar de 25mm y 50mm en la columna. Intercambiable con la perforación de la traba del cierre en la perforación estándar de 25mm.



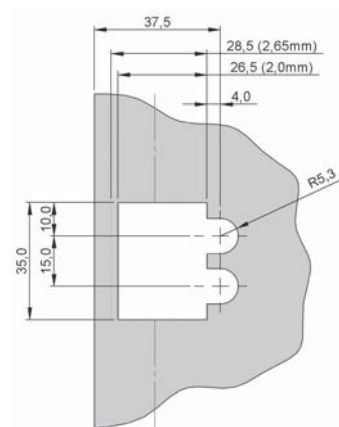
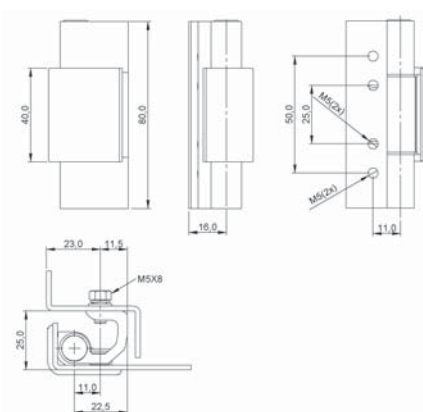
DIPA120°-SZ



DIPA120°-PZ



DIPA120°-EP



recorte de fixação
cut out
corte de fijación

MODELO – MODEL – MODELO	CÓDIGO – CODE – CÓDIGO	FIXAÇÃO – FIXING – FIJACIÓN
DIPA120°-SZ	41.388.201	Solda – Welding – Soldadura
DIPA120°-PZ	41.388.202	Parafuso – Screw – Tornillo
DIPA120°-EP	41.333.202	Pino – Pin – Clavija
DIPA120°-EB	41.3DD.202	Pino – Pin – Clavija

DIPA 180°

dobradiças injetadas
injected hinges
bisagras injectadas



painel – panel – armario

180° – 180° – 180°

Fixação

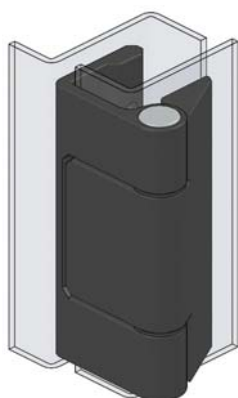
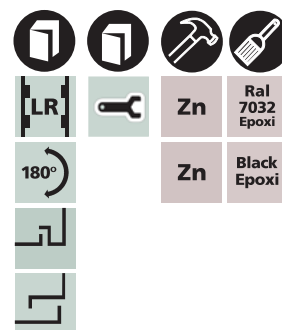
Por pino e parafuso em aço zin-
cado (incluso no fornecimento)
com furação padrão de 25mm
e de 50mm na coluna.

Fixing

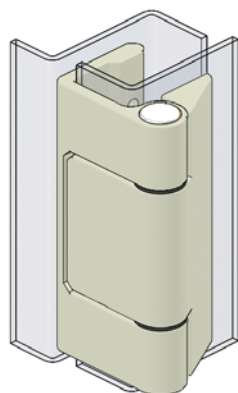
By pin and zinc plated steel
screw (included) with 25mm
and 50mm standard hole in
the column.

Fijación

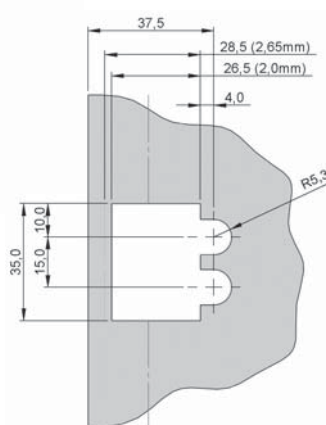
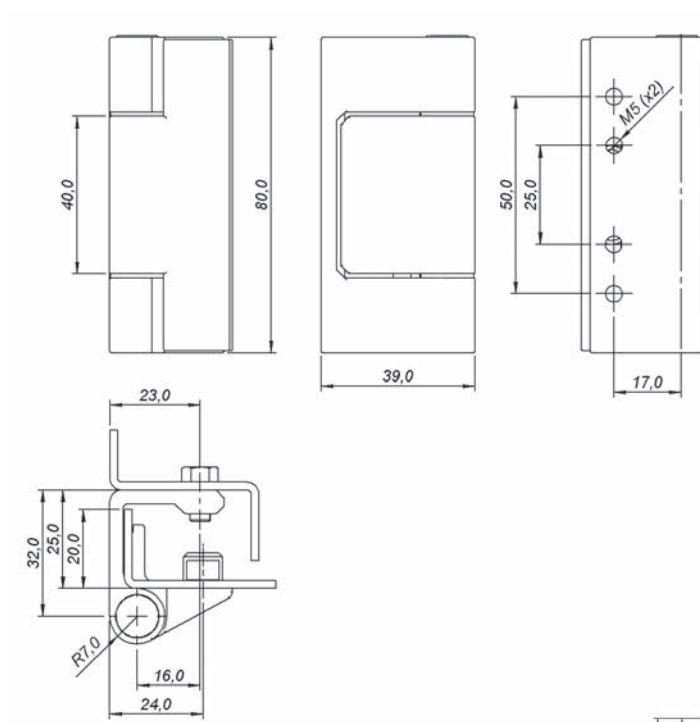
Por eje y tornillo en acero cin-
cado (incluido en el suministro)
con el estándar de 25mm y
50mm de perforación en la
columna.



DIPA180°-P



DIPA180°-B



recorte de fixação
cut out
corte de fijación

MODELO – MODEL – MODELO	CÓDIGO – CODE – CÓDIGO
DIPA180°-P	41.433.201
DIPA180°-B	41.4DD.201

DELE

dobradiças estampadas
stamped hinges
bisagras estampadas



leve – lightweight – liviana



Fixação

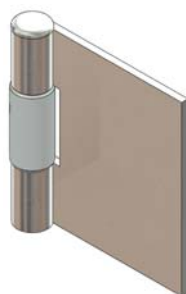
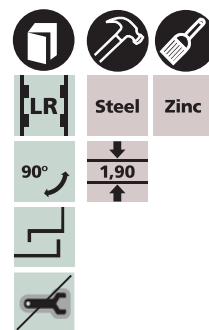
Por solda e por parafuso (não incluso no fornecimento).

Fixing

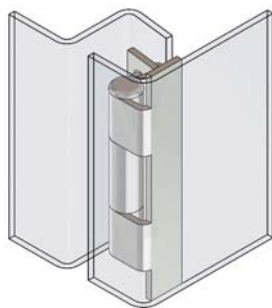
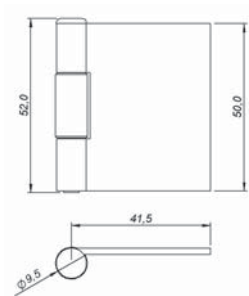
By welding and by screw (not included).

Fijación

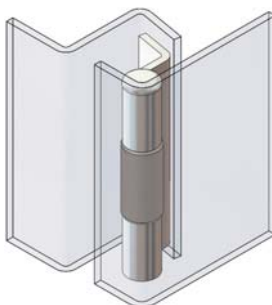
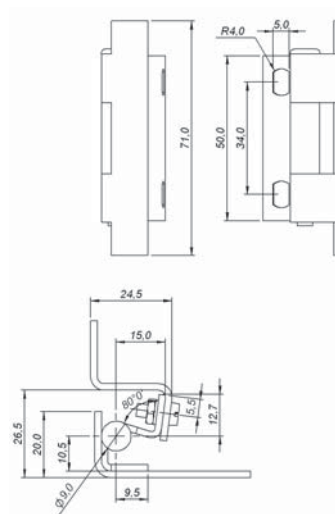
Por soldadura y por tornillo (no incluido en el suministro).



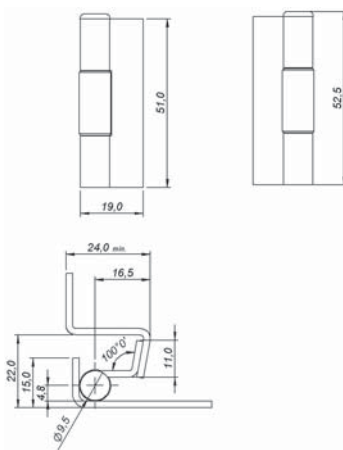
DELE-0



DELE-1



DELE-3



MODELO – MODEL – MODELO	CÓDIGO – CODE – CÓDIGO
DELE-0	40.56C.201
DELE-1	40.566.201
DELE-3	40.56C.202

dobradiças hinges bisagras

DEME

dobradiças estampadas
stamped hinges
bisagras estampadas



média – medium – mediana

Fixação

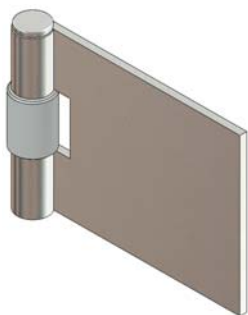
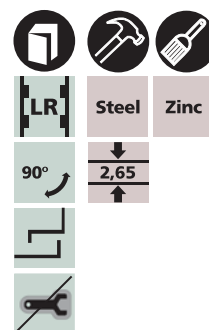
Por solda e por parafuso (não incluso no fornecimento).

Fixing

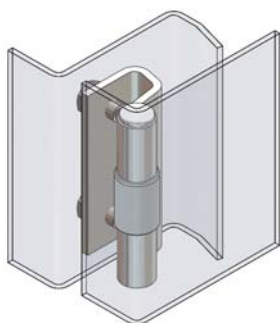
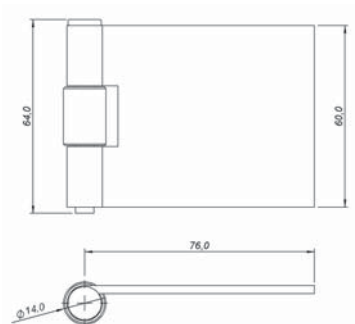
By welding and by screw (not included).

Fijación

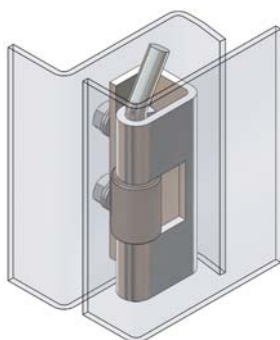
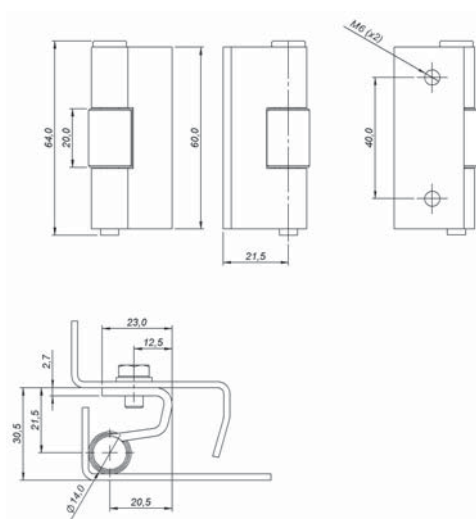
Por soldadura y por tornillo (no incluido en el suministro).



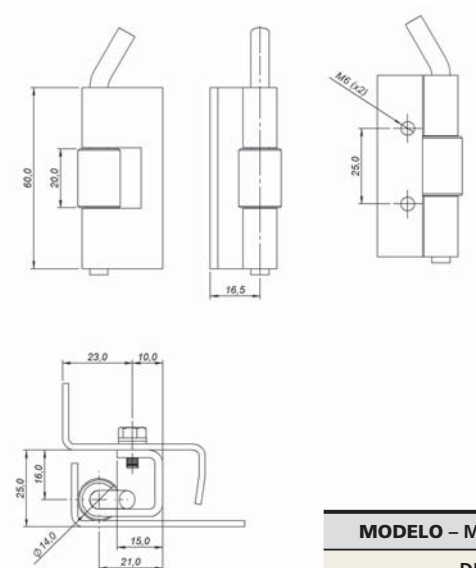
DEME-0



DEME-2



DEME-D25/120°



MODELO – MODEL – MODELO	CÓDIGO – CODE – CÓDIGO
DEME-0	40.66C.201
DEME-2	40.66C.203
DEME-D25/120°	40.66C.204

DEPE

dobradiças estampadas
stamped hinges
bisagras estampadas



pino removível – removable pin – eje removible

Fixação
Por solda.

Fixing
By welding.

Fijación
Por soldadura.

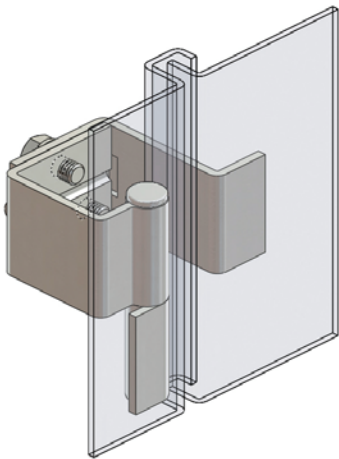
LR

Steel

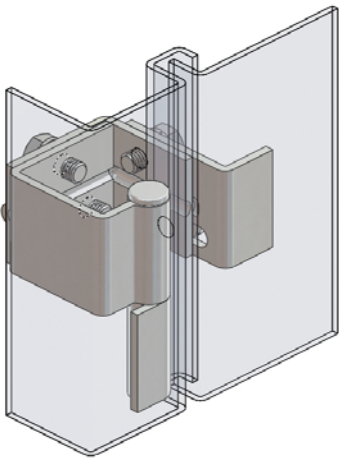
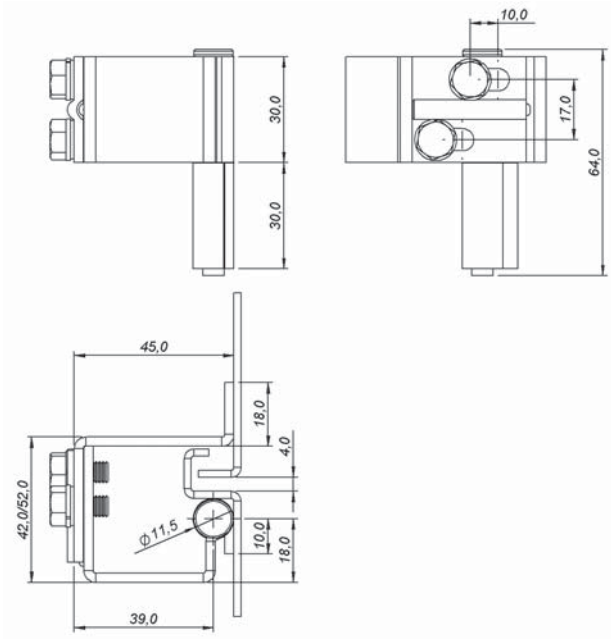
Zinc

90°

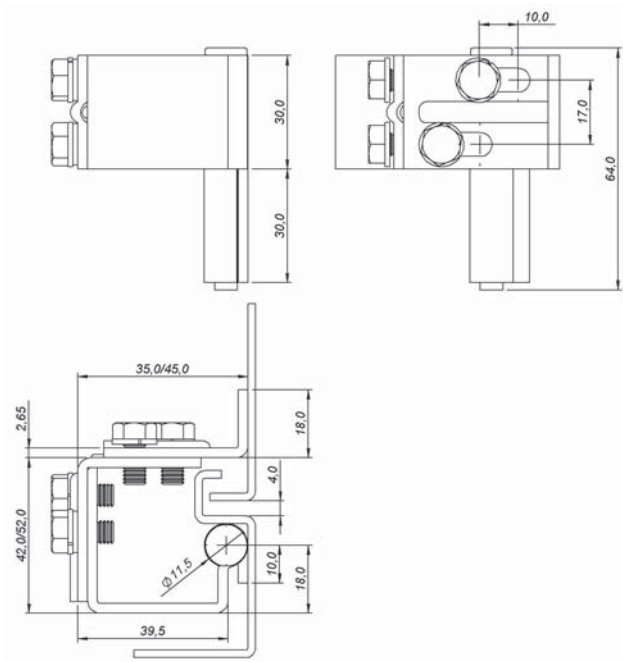
2,65



DEPE-RS



DEPE-RD



MODELO – MODEL – MODELO	CÓDIGO – CODE – CÓDIGO
DEPE-RS	40.866.202
DEPE-RD	40.866.204

dobradiças
hinges
bisagras

DEPF

dobradiças estampadas
stamped hinges
bisagras estampadas

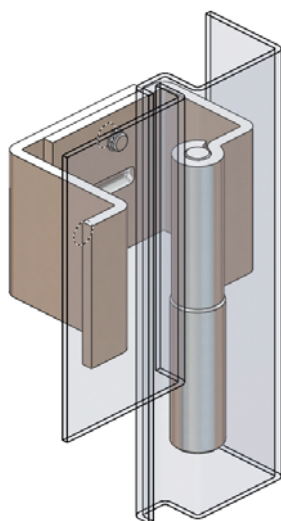
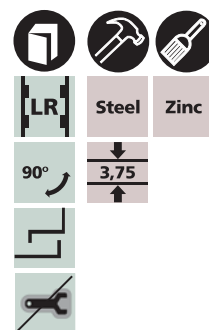


pino fixo – fixed pin – eje fijo

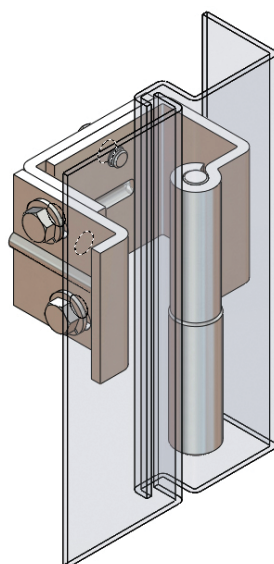
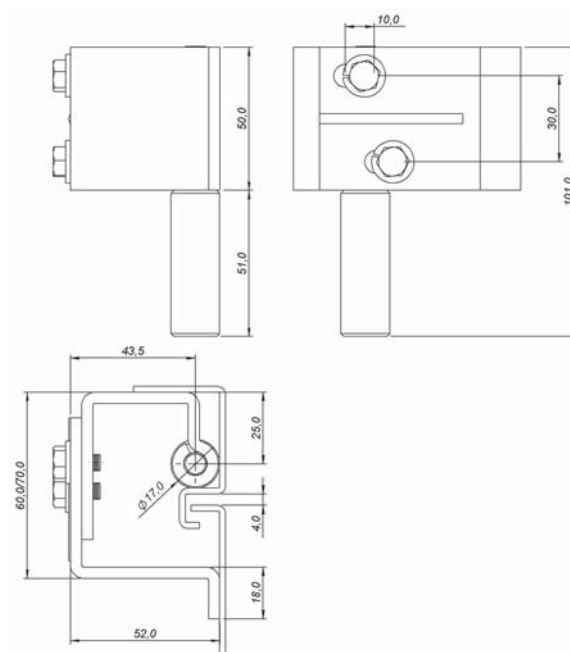
Fixação
Por solda.

Fixing
By welding.

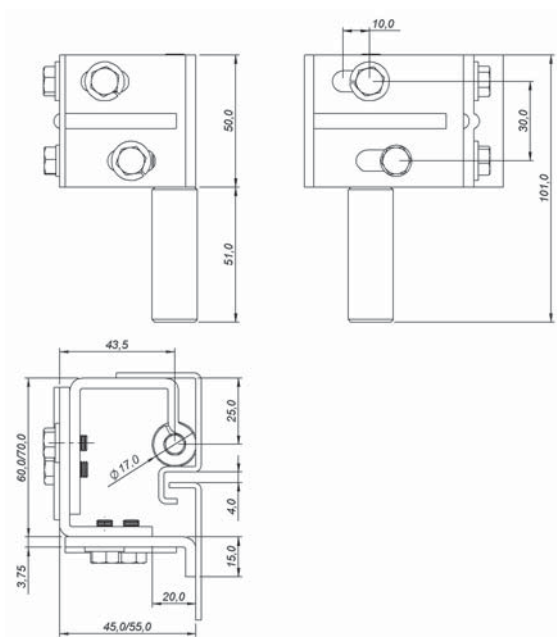
Fijación
Por soldadura.



DEFP-RS



DEFP-RD



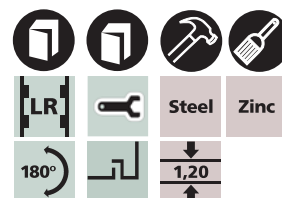
MODELO – MODEL – MODELO	CÓDIGO – CODE – CÓDIGO
DEPF-RS	40.766.202
DEPF-RD	40.766.204

piano – piano – piano

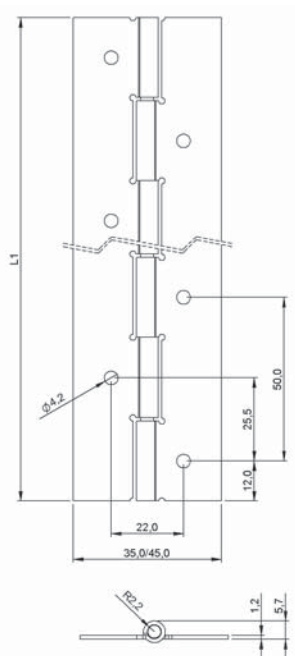
com furação – with hole – con perforación


Fixação
Por parafuso ou rebite.

Fixing
By screw or rivet.

Fijación
Por tornillo o remache.


DEPA-F



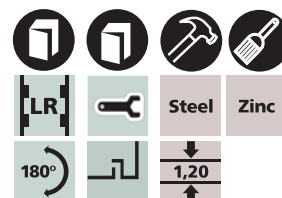
MODELO – MODEL – MODELO	CÓDIGO – CODE – CÓDIGO	L1 (mm)
DEPA-F35	40.966.201	150
	40.966.203	300
	40.966.205	600
	40.966.207	900
	40.966.209	1200
	40.966.222	2000
DEPA-F45	40.966.211	150
	40.966.213	300
	40.966.215	600
	40.966.217	900
	40.966.219	1200
	40.966.224	2000

piano – piano – piano

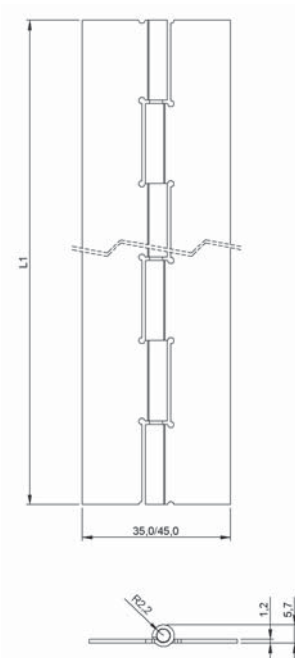
sem furação – without hole – sin perforación


Fixação
Por solda.

Fixing
By welding.

Fijación
Por soldadura.


DEPA-L



MODELO – MODEL – MODELO	CÓDIGO – CODE – CÓDIGO	L1 (mm)
DEPA-L35	40.966.202	150
	40.966.204	300
	40.966.206	600
	40.966.208	900
	40.966.210	1200
	40.966.223	2000
DEPA-L45	40.966.212	150
	40.966.214	300
	40.966.216	600
	40.966.218	900
	40.966.220	1200
	40.966.225	2000

DU12

dobradiças usinadas
machined hinges
bisagras mecanizadas



12mm – 12mm – 12mm

Fixação

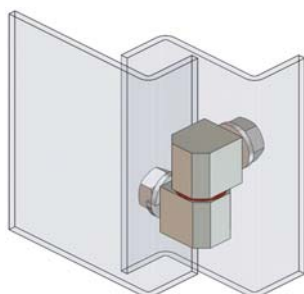
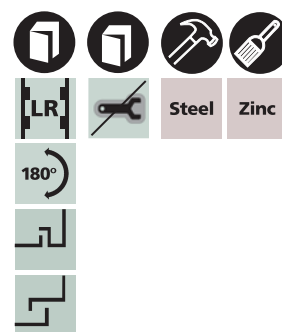
Por porca e arruela de pressão
(incluso no fornecimento).

Fixing

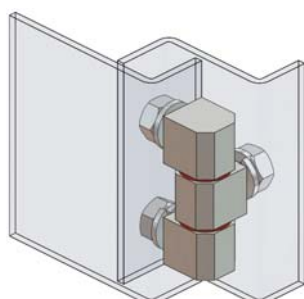
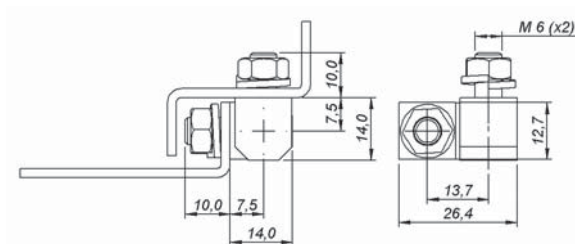
By nut and pressure washer
(included).

Fijación

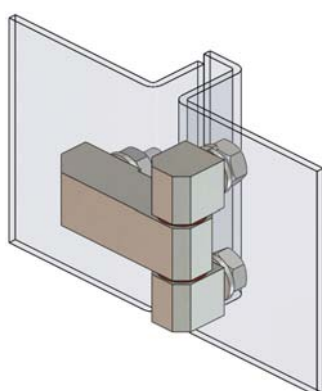
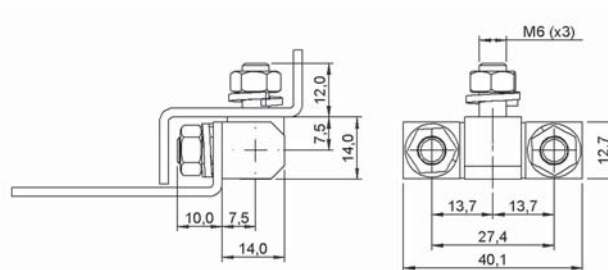
Por tuerca y arandela de presión
(incluido en el suministro).



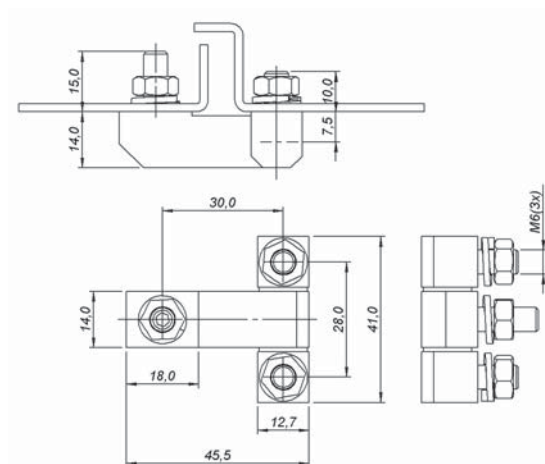
DU1208-D



DU1208-T



DU1230-T



MODELO – MODEL – MODELO	CÓDIGO – CODE – CÓDIGO
DU1208-D	42.1CC.L01
DU1208-T	42.2CC.L01
DU1230-T	42.3CC.L01

DU16

dobradiças usinadas
machined hinges
bisagras mecanizadas



16mm – 16mm – 16mm



Fixação

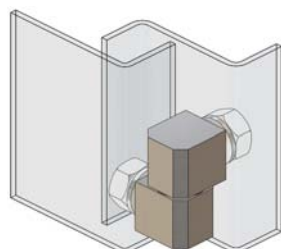
Por porca e arruela de pressão
(incluso no fornecimento).

Fixing

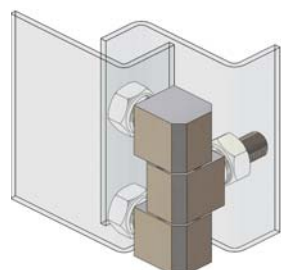
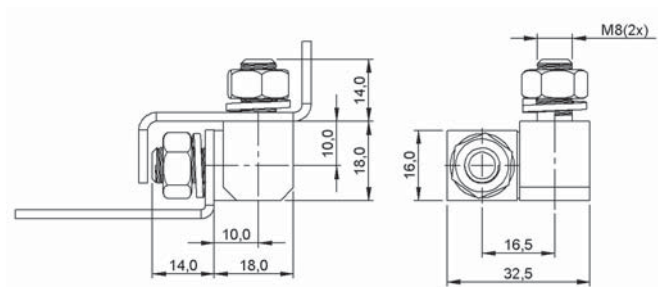
By nut and pressure washer
(included).

Fijación

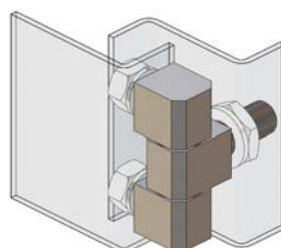
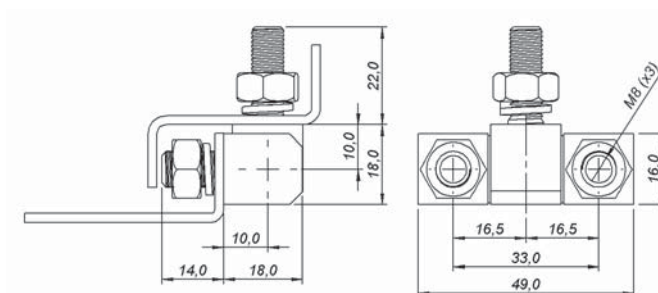
Por tuerca y arandela de presión
(incluido en el suministro).



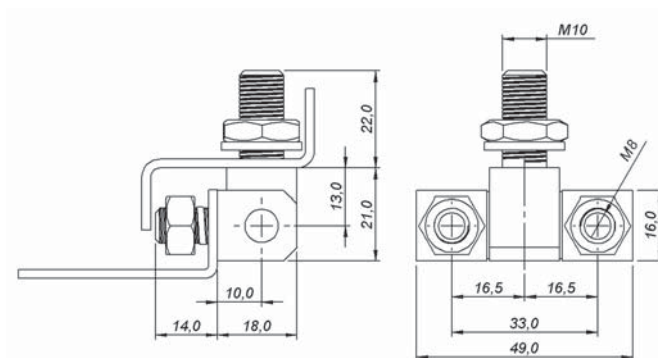
DU1610-D



DU1610-T



DU1613-T



MODELO – MODEL – MODELO	CÓDIGO – CODE – CÓDIGO
DU1610-D	41.566.201
DU1610-T	41.666.201
DU1613-T	41.766.201

dobradiças
hinges
bisagras

DU18

dobradiças usinadas
machined hinges
bisagras mecanizadas



18mm – 18mm – 18mm

Fixação

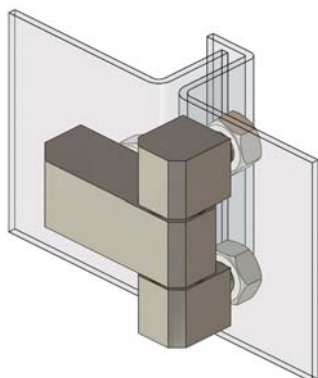
Por porca e arruela de pressão
(incluso no fornecimento).

Fixing

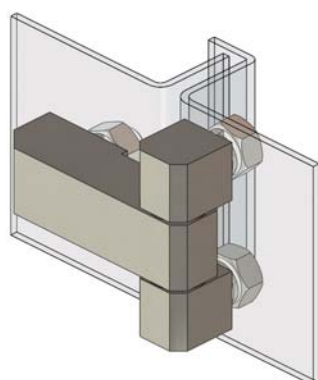
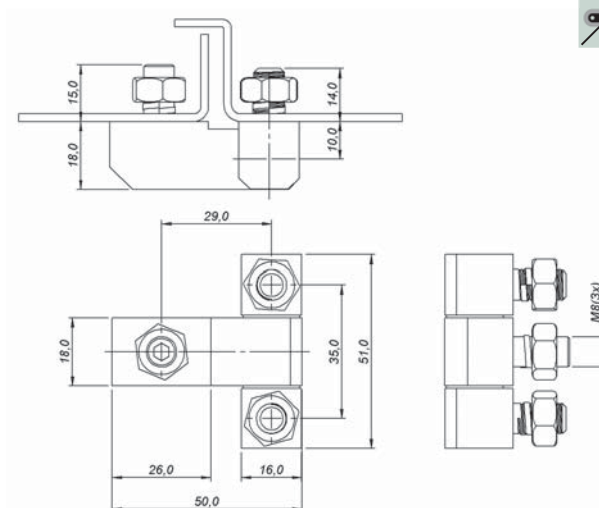
By nut and pressure washer
(included).

Fijación

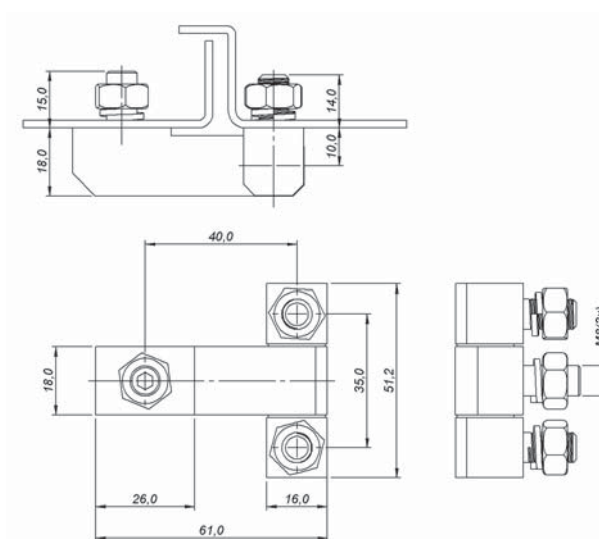
Por tuerca y arandela de presión
(incluido en el suministro).



DU1829-T



DU1840-T



MODELO – MODEL – MODELO	CÓDIGO – CODE – CÓDIGO
DU1829-T	41.866.201
DU1840-T	41.966.201